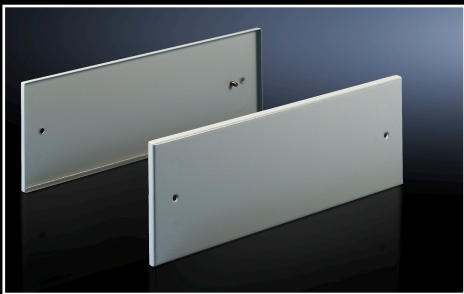


Rittal – The System.

Faster – better – everywhere.

► Top Module for TS Enclosures

The TS top-mounting module is ideal for overhead cable management or for housing a busbar power distribution system. This system allows for extra space to accommodate a wide variety of system bars and chassis.



Removable sidewalls and trim panels

- Sidewalls and trim panels are easily removed for access to interior components
- Gasket securely seals against outside contaminants



Open bottom design

Top Module for TS Enclosures

Part Number	For Enclosure		Module Height
	Width	Depth	
1020320	800	600	200
1020321	800	800	200
1020322	800	500	300
1020323	800	800	300
1020324	1200	500	200
1020325	1200	600	200
1020326	1200	800	200
1020327	1200	500	300
1020328	1200	600	300
1020329	1200	800	300
1020330	1600	600	300
1020331	1600	800	300
XCA1020332	1000	600	200
XCA1020333	1000	600	300
XCA1020334	1000	1000	600

Note: Imperial measurements are approximate, metric measurements are exact.

All parts numbers listed include the following items when ordered:

Removable Sidewalls x 2
 Removable Trim panels x 2
 Fixing hardware for securing to TS8 enclosure RAL 7035 powder coated carbon steel

Protection Rating:

Maintains NEMA 12 Rating
 NEMA 4 Rating Upon Request



For more information, please contact your local Rittal distributor or visit our website: www.rittal.ca

Rittal Systems Ltd. (Calgary)
 Unit 230-4311, 12st N.E. • Calgary Alberta T2E 4P9
 Phone: 403-219-0466 • Fax: 403-291-5648 • Toll-free: 888-461-4321

Rittal Systems Ltd. (Head Office)
 6485 Ordan Drive • Mississauga Ontario L5T 1X2
 Phone: 905-795-0777 • Fax: 905-795-9548 • Toll-free: 800-399-0748 • Email: marketing@rittal.ca • Online: www.rittal.ca